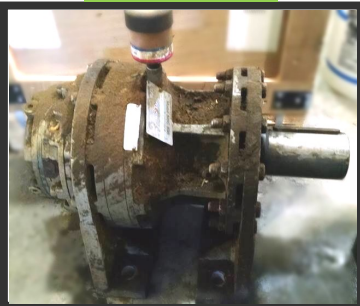


Gear Box Rebuilds

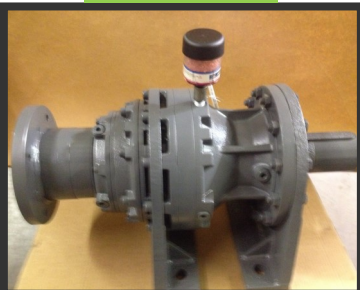
sample

BEFORE



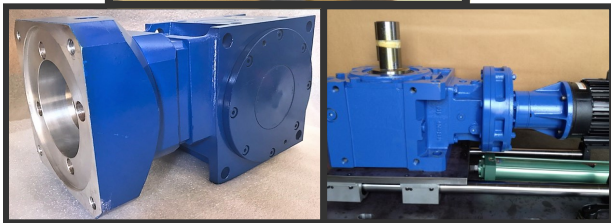
sample

AFTER



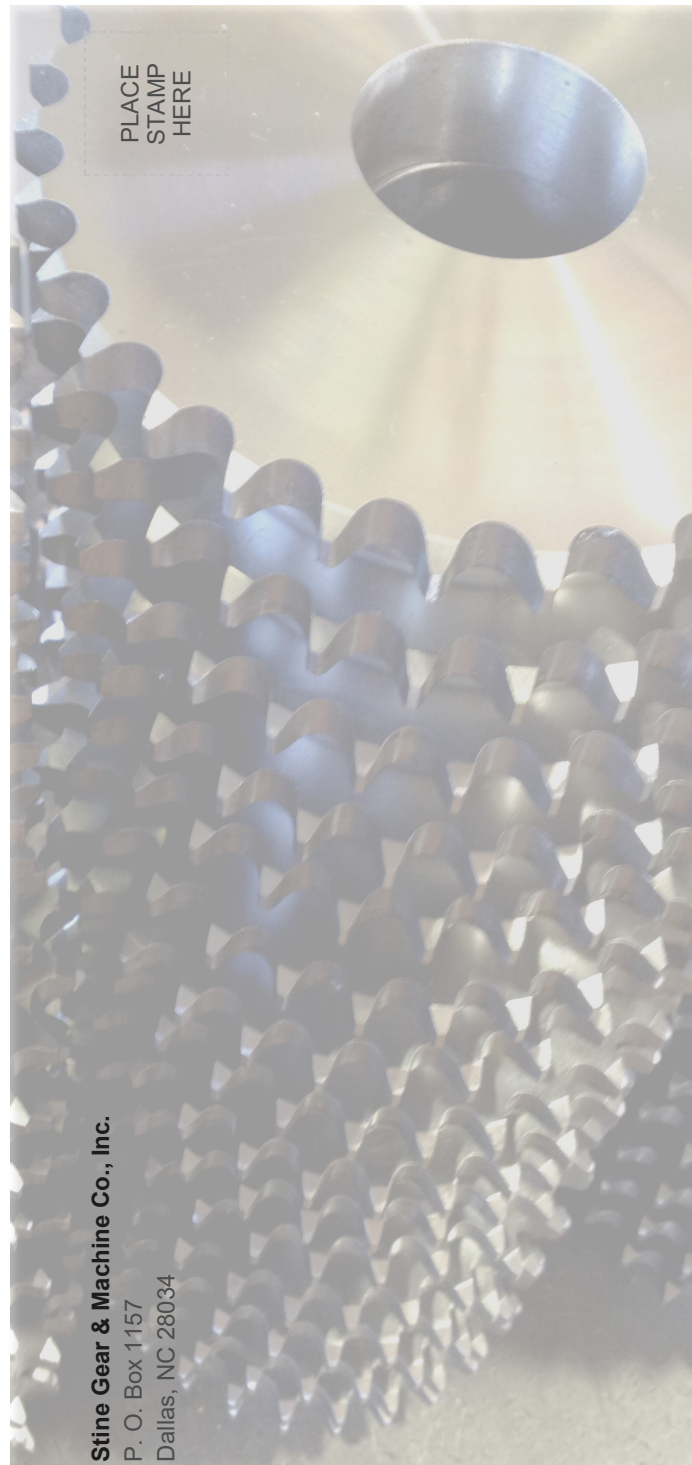
**ANY
BRAND**

**UP TO
4,000
LBS**

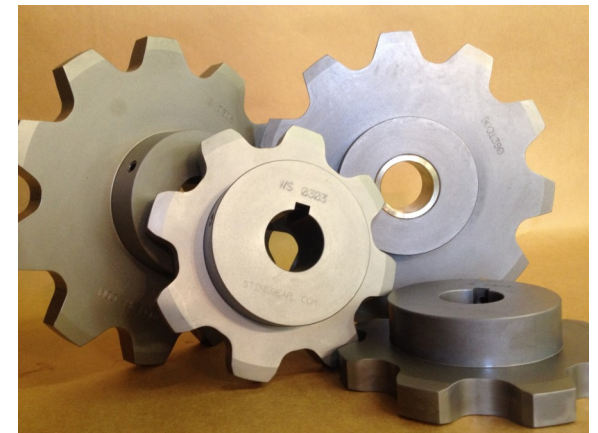


*"The **BEST** machine shop in the Carolinas... Very professional and quick to respond to the customer's needs."*

- Jeff Revis, Motion Industries



Stine Gear & Machine Co., Inc.
P. O. Box 1157
Dallas, NC 28034



Stine Gear

2019
Products and Services

www.stinegear.com
1-888-784-6343

**CUSTOM GEARS,
SPROCKETS,
AND POWER
TRANSMISSION
COMPONENTS
SINCE 1970**

Capabilities

ALL METRIC PITCHES AVAILABLE!

**FAST, FREE
QUOTES**

**QUALITY
MACHINED
PARTS**

SPUR GEARS



**WORM &
WORM GEARS**



SPROCKETS



**SPLINED
SHAFTS**



INTERNAL GEARS



**GEARS UP TO
38" IN DIAMETER**

**SHAFTS UP TO
60" LONG**

**INTERNAL GEARS
UP TO 18" ID WITH
3" FACE**

**TIMING BELT
PULLEYS**



**BEVEL &
MITER GEARS**



HELICAL GEARS



**GEAR BOX
REBUILDS**



*All parts are custom
manufactured. If you
require something
not listed, please call
1-888-784-6343.*



Our Company History

Stine Gear & Machine Company was founded in 1970 by Mr. Robert Stine. Before opening the doors, Mr. Stine hired Mr. Guss Harper as General Manager to run the start-up. In 1984, Guss Harper bought the company from Mr. Stine with intentions of growing the business and its capabilities. Throughout the next two decades, he did exactly that!

In 2000, Guss Harper retired from the company, leaving his son, Brian Harper, in charge as President. Brian shared his father's strategy of growth while keeping in mind the importance of quality — a characteristic the company has always been known for.

Brian, along with his wife Suzette, became owners of Stine Gear & Machine Company in 2014 and look forward to continuing the family tradition of custom manufactured gears, sprockets, and power transmission components while expanding additional services such as gear box rebuilds, enhanced reverse engineering and high volume production.

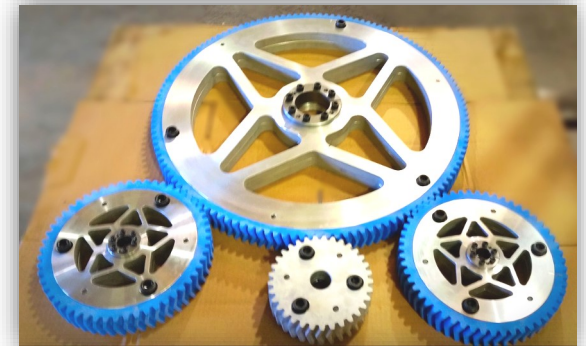
Industries Served

Stine Gear provides quality products and expert advice for many industries, including but not limited to:

Envelope Manufacturing
Printing
Packaging
Bottling

Plastics Manufacturing
Paper Board & Pulp
Food Processing
Chemical Processing
Transportation
Water Treatment
Construction
Aggregate
Mining
Specialty Textile
Furniture Manufacturing

*All parts offered by Stine Gear & Machine Co., Inc. are manufactured by Stine Gear, not by or for the original equipment manufacturer. Part numbers are for reference purposes only. Stine Gear has no affiliation with any OEM.



sales@stinegear.com

**www.stinegear.com
1-888-784-6343**

*Parts Shipped
throughout the U.S.
and Puerto Rico*

